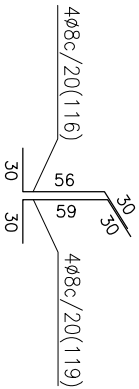
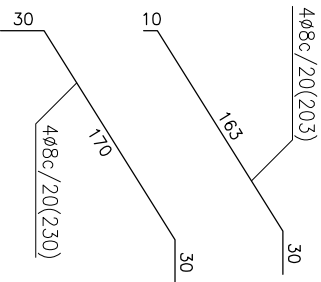
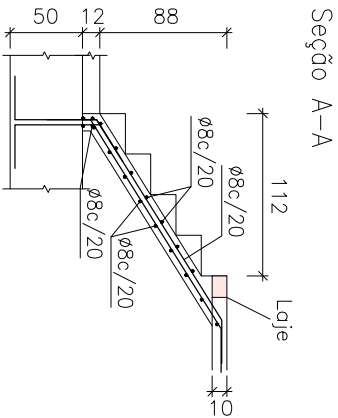
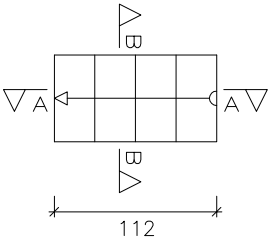
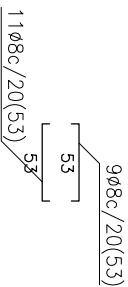
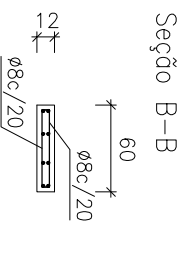


						COR DO LAYER
7	7	7	7	7	7	PENA Nº
0,46	0,40	0,35	0,30	0,25	0,15	ESPESSURA

Tramo 1	
Geometria	
Largura	0,600 m
Espessura	0,12 m
Piso	0,280 m
Espelho	0,175 m
Desnível que vence	1,00 m
Nº de degraus	5
Piso final	Piso 1
Piso inicial	Fundação
Cargas	
Peso próprio	0,300 t/m2
Degraus (Concretado com a laje)	0,185 t/m2
Revestimento	0,100 t/m2
Guarda—corpos	0,300 t/m
Sobrecarga	0,300 t/m2
Concreto	C25, em geral
Aço	CA—50—A e CA—60—B
Materiais	
Cob. geométrico	3,0 cm



Resumo Aço ESCALA	Comp. total (m)	Peso + 10% (kg)	Total
CR-35-A	39,5	17	17

[illegible]